



**Size:** UK 10/12-12/14 (14/16-16/18) -US 6/8-8/10 (10/12-12/14)  
EU 36/38-38/40 (40/42-42/44)

**Note:** figures in brackets ( ) refer to larger size.

Where only one figure is given this refers to both sizes.

**Skill Level:** intermediate

**How much yarn:** 12 (14) balls (each ball 50g and 75m) of Cusco yarn (40% Alpaca, 27% Virgin Wool, 33% Cotton) shade no. 30895

**Needles:** Pair of 5.00mm (no. 6) knitting needles  
Pair of 6.00mm knitting needles.

Two Double-pointed (Dp) 6.00mm knitting needles

**Sewing needle:** Yarn needle with rounded point

**Other items:** Stitch-holders.

## STITCHES

**Using needles:** tubular stitch (at end of work)

PI, K3 RIB (work over a multiple of 4 sts plus 1 st, starting and ending RS rows with PI). - STOCKING STITCH (ST ST):

1 row K (RS), 1 row P (WS). - REVERSE STOCKING STITCH

(REV ST ST): 1 row P (RS), 1 row K (WS).

CROSSED STITCH: work over 41 sts, following Chart and Key. Rep Motif from 1st row to 32nd row throughout. Work crossed sts as follows: **7 Right Crossed stitches:** slip next 3 sts onto 1st Dp needle, on backside, slip following st onto 2nd Dp needle, on backside, K next 3 sts, P1 from 2nd Dp needle, K3 from 1st Dp needle. **7 Left Crossed stitches:** slip next 3 sts onto 1st Dp needle, on frontside, slip following st onto 2nd Dp needle, on backside, K next 3 sts, P1 from 2nd Dp needle, K3 from 1st Dp needle.

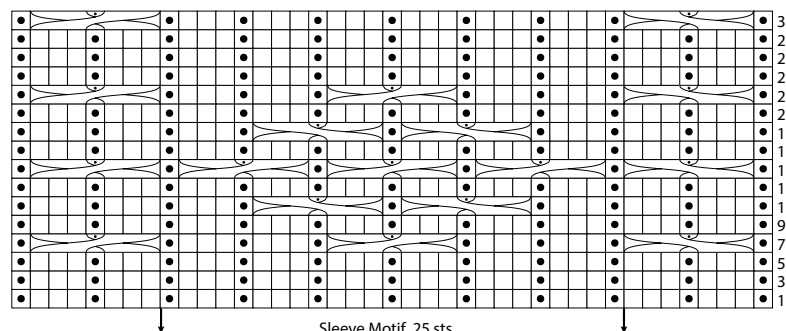
**TENSIONS** (after work has been steamed)

12 sts and 17 rows measure 10cm square over P1, K3 rib with 6.00 mm needles. 41 sts in crossed st measure 30cm approx in width with 6.00 mm needles. Take time to check tension before starting work: it is essential to work to the stated tensions to achieve success.

## INSTRUCTIONS

**Back:** with 5.00mm needles cast on 67 (75) sts. For lower border work 14 rows in P1, K3 rib, corresponding to 7cm, with 1 selvedge st at each end (= at beg of row, slip purlways 1st st onto right needle, at end of row K1 last st). Change to 6.00mm needles and work as follows: 1 selvedge st, 12 (16) sts in P1, K3 rib, 41 sts in crossed st, 12 (16) sts in P1, K3 rib starting with K3, end with 1 selvedge st. Inc 1 st on 21st row at each end, inside selvedge st, and work increased sts in rev st st. There are 69 (77) sts. When Back

CROSSED STITCH



KEY

□ = K1    ◻ = P1    ◻ = 7 Left Crossed stitches  
◻ = 7 Right Crossed stitches    Each Chart square corresponds to 1 stitch and 1 row.

measures 59 (66)cm from beg, corresponding to 88 (100) rows from lower border, shape neck: cast off centre 13 (15) sts, join another ball of yarn and cont separately on either part, casting off on neck edge every alternate row: 3 sts once, 2 sts once and 1 st once. AT THE SAME TIME, at beg of neck shaping, shape shoulders, casting off every alternate row: 7 sts once and 5 (6) sts 3 times.

**Right Front:** with 5.00mm needles cast on 39 (43) sts. Work lower border as Back, with 1 selvedge st at each end. Change to 6.00mm needles and work as follows: 1 selvedge st, 33 sts in crossed st (follow first 33 Chart sts and key), 4 (8) sts in P1, K3 rib starting with K3, end with 1 selvedge st. When Back measures 19cm from beg, corresponding to 20 rows from lower border, work pocket opening border as follows: leave first 11 sts on a stitch-holder, with 5.00mm needles work 7 rows in stocking st only on next 21 sts and cast off these 21 sts knitways on WS of work.

**Inner pocket:** with 6.00mm needles cast on 17 sts (less than the 21 sts of border as these 17 sts are worked in st st) and work 18 rows, corresponding to 10cm, in stocking st. Now join these st to main piece: work first 11 sts from stitch-holder in crossed st, as 21st Chart row, and work the 17 inner pocket sts increasing 4 sts evenly as 21st Chart row, then work last 7 (11) sts before unworked as 21st Chart row. Cont to work in crossed st. When Right Front measures 28 (30)cm from beg, corresponding to 36 (40) rows from lower border, shape neck, decreasing on RH (right hand) side 1 st on next and every following 3rd row 17 (18) times. AT THE SAME TIME, when Right Front measures 59 (66)cm from beg, corresponding to 88 (100) rows from lower border, shape shoulder: cast off on LH (left hand) side, every alternate row: 7 sts once and 5(6) sts 3 times.

**Left Front:** with 5.00mm needles cast on 39 (43) sts. Work lower border as Back, with 1 selvedge st at each end. Change to 6.00mm needles and work as follows: 1 selvedge st, 4 (8) sts in P1, K3 rib, 33 sts in crossed st (begin from 9th st from Chart), end with 1 selvedge st. Cont to work as given for Right Front, reversing shapings.

**Sleeve:** or each sleeve, with 5.00mm needles cast on 35 sts. Work cuff as Back lower border Back, with 1 selvedge st at each end. Change to 6.00mm needles and work as follows: 1 selvedge st, 4 sts in P1, K3 rib, 25 sts in crossed st (follow centre 25 sts from Chart), 4 (sts in P1, K3 rib starting with K3, end with 1 selvedge st. Inc 1 st at each end, inside selvedge sts, on 3rd and (alternatively every 4th and 6th) following row 6 (7) times: work increased sts in P1, K3 rib. There are 59 (63) sts. When Sleeve measures 47 (51)cm from beg, corresponding to 68 (76) rows from cuff, cast off all sts.

## FINISHING

Sew inner pockets to Fronts on WS and pocket border sides on RS. Sew shoulder seams. **Neck-and-opening border:** with RS facing and 5.00mm needles, pick up 203 (227) sts along Front openings and and Back neck-edge, work 22 rows in P1, K3 rib, starting and ending with K3, and 4 rows in tubular st (=11cm). Then cast off all sts with yarn needle in darning stitch. Set in sleeves. Sew side and sleeve seams.

**Note:** wash garment carefully at low temperatures, with a very little fabric softener. Lay the garment to dry on a flat surface, without ever hanging it.